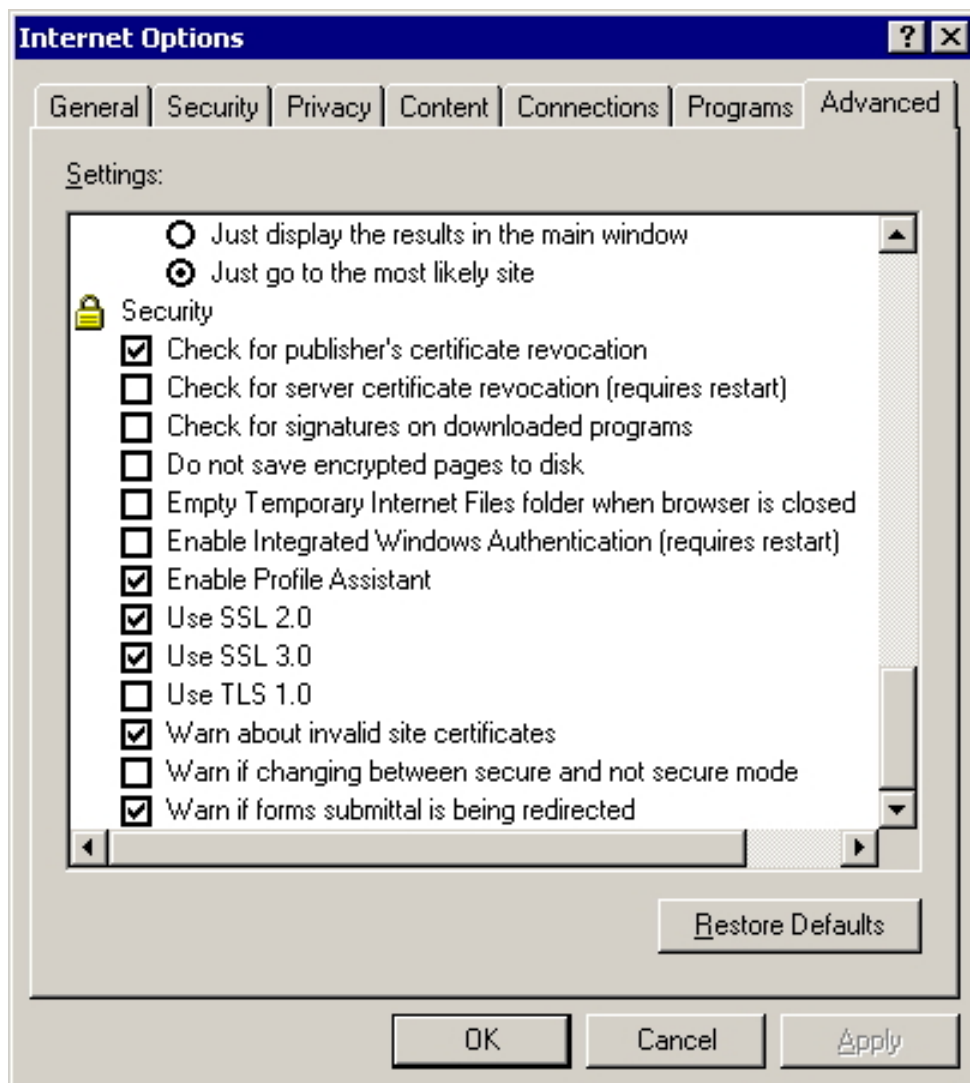


How to Enable TLS v1.0 in Microsoft Internet Explorer 6 and disable SSL v2 and v3

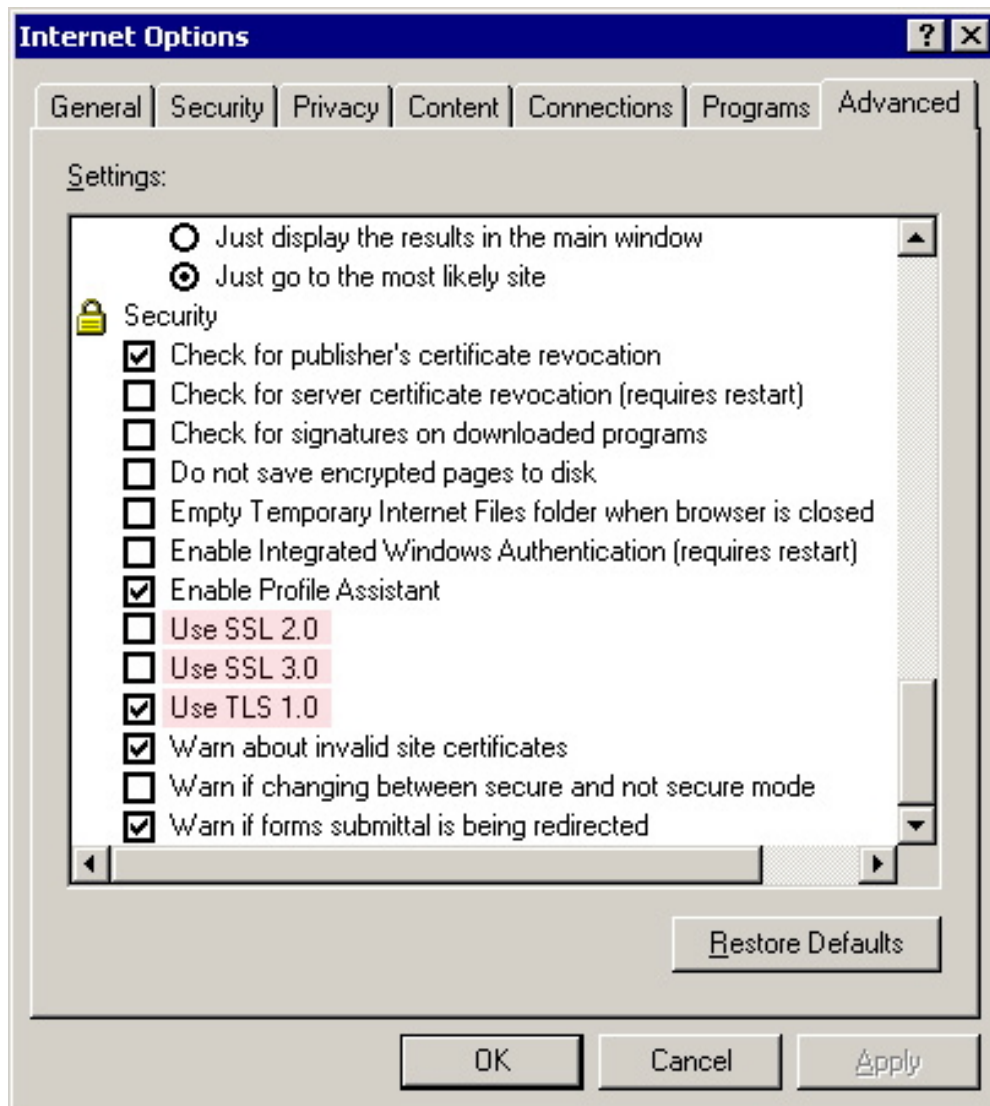
(**Please note** – you should *really* upgrade to a newer version of Internet Explorer, or a browser such as [Mozilla FireFox](#) if you can.)

- In Internet Explorer, go to the **Tools** menu, **Internet Options**.
- Select the **Advanced** tab.
- Scroll to the Security section (at the bottom).



(See screen shot and instructions on next page...)

- **Uncheck Use SSL 2.0** (**not** trusted since 1996)
- **Uncheck Use SSL 3.0** (**no** longer trusted due to the POODLE attack)
- **Check Use TLS 1.0**



... Click **OK** to save the changes.

- Then go back into the **Tools** menu, **Internet Options**.
- Select the **Advanced** tab.
- Scroll to the Security section (at the bottom) to make sure the settings were accepted.

You will now be able to visit sites that require TLS v1.0 security or above.

However, please note that [installing another browser](#) is recommended as Internet Explorer 6 is not compliant with modern web standards, and has **not** been [patched](#) for security vulnerabilities since 2011.